

3 PHASE STEPPING MOTOR

24HC 3-PHASE 1.2°

Key Features

- 3-phase Motor
- Low Noise
- Smooth Movement
- Low Vibration



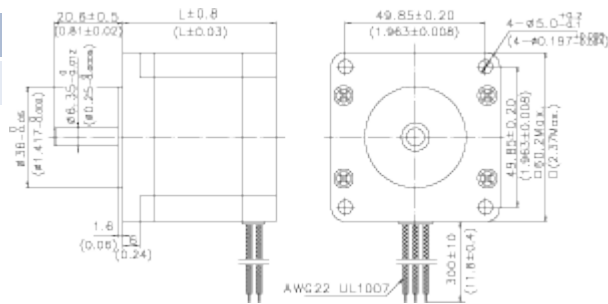
General Specifications

Model Number	Resistance per Phase	Inductance per Phase	Rated Current	Holding Torque		Detent Torque		Rotor Inertia	
	ohm	mH	A	mNm	oz-in	mNm	oz-in	g.cm ²	oz-in ²
24HC2301	0.32	0.76	5.8	900	127.48	40	5.66	260	1.43
24HC3301	0.45	1.30	5.8	1500	212.46	70	9.92	460	2.53
24HC4301	6	10.2	1.5	540	76.49	25	3.54	180	0.99

Wiring Diagram

Mechanical Dimensions

Model Number	L	Mass
	mm(in.)	kg(lb.)
24HC2**	54.5(2.13)	0.80(1.76)
24HC3**	76.5(2.98)	1.30(2.86)
24HC4**	45.5(1.77)	0.50(1.10)



34HC 3-PHASE 1.2°

Key Features

- 3-phase Motor
- Low Noise
- Smooth Movement
- Low Vibration



General Specifications

Model Number	Resistance per Phase	Inductance per Phase	Rated Current	Holding Torque		Detent Torque		Rotor Inertia	
	ohm	mH	A	mNm	oz-in	mNm	oz-in	g.cm ²	oz-in ²
34HC0301	1.8	11.5	3.0	2000	283.29	100	14.16	1100	6.05
34HC1301	4.6	39.0	2.0	4000	566.57	150	21.25	1850	10.18
34HC2301	1.2	10.5	5.2	6000	849.86	200	28.33	2750	15.13

Wiring Diagram

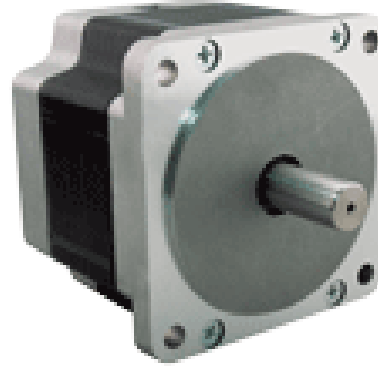
Mechanical Dimensions

Model Number	L	Mass	
	mm(in.)	kg(lb.)	
34HC0**	66.5(2.59)	1.6(3.52)	
34HC1**	96.0(3.74)	2.7(5.94)	
34HC2**	125.5(4.89)	3.8(8.36)	

43HC 3-PHASE 1.2°

Key Features

- 3-phase Motor
- Low Noise
- Smooth Movement
- Low Vibration



General Specifications

Model	Step Angle (°)	Length L(mm)	Holding Torque (N.m)	Current (A/Phase)	Rotor inertia (Kg.cm ²)	Weight (Kg)
43HC31112	1.2	124.5	8	2.5	6	5
43HC31115		148	12	3.5	9.72	6.6
43HC31118		182	16	3.75	13.56	9
43HC31122		216	20	4	11.1	11.1